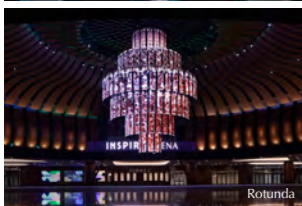
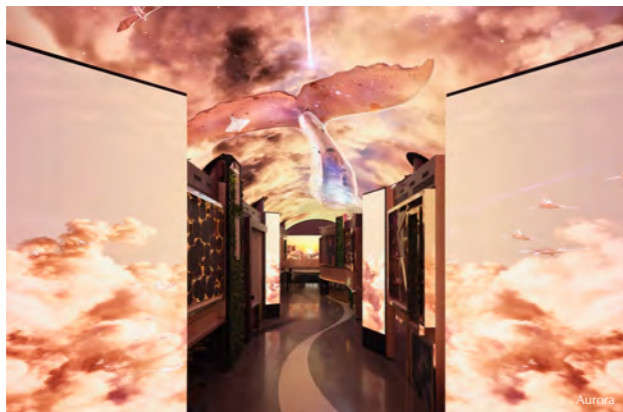
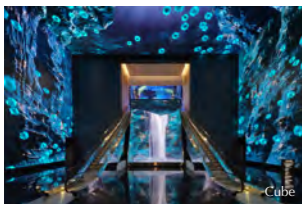




DIGITAL ATTRACTIONS

INSPIRE offers an innovative and immersive digital experience through the Cube, Aurora, and Rotunda. At the entrance to the Aurora, the Cube boasts magnificent high-resolution LED displays of nature. Past the Cube is the Aurora, an immersive entertainment street canopied by a 150-meter LED display of surreal imagery. At the end of the Aurora lies the Rotunda, a mesmerizing kinetic chandelier comprised of 156 LED panels.

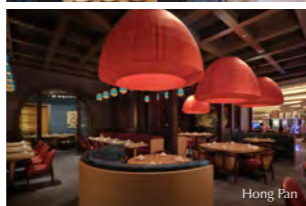


DINING

INSPIRE's dining spaces transcend borders, offering a gourmet tour around the world. Whether it's the sizzling perfection of Michael Jordan's Steak House - the first location outside of America, the ever-evolving menus at Chef's Kitchen Buffet, or the diverse array of Northern Chinese cuisine at Hong Pan - each dish provides a perfected experience.

FEATURES

- Chef's Kitchen
- MJ23 Sports Bar & Grill
- Michael Jordan's Steak House
- Hi-Fi Chicken & Beer
- INSPIRE Pavilion
- Aurora Bar
- Brasserie 1783
- Baker's Kitchen
- Garden Farm Café
- Horizon Lounge
- Hong Pan
- Minagi



DISCOVERY PARK

Nestled in the sprawling outdoors, Discovery Park is a family-centric haven of diverse offerings designed to delight guests of every age.



OASIS GOURMET VILLAGE

Taking inspiration from the 'Tree of Life,' the Oasis Gourmet Village is a large dining plaza offering a variety of cuisines and glimpses into different cultures.



INSPIRE MALL

INSPIRE Mall is a cultural complex merging shopping, dining, and entertainment where guests can find both relaxation and excitement.



LE SPACE

Journey beyond the cosmos with Le Space. Comprised of 18 unique exhibits, Le Space is Korea's largest interactive Media Art Exhibition.



MEETINGS & EVENTS

INSPIRE boasts exceptional conference and event facilities, equipped with state-of-the-art technologies and sophisticated interiors, and capable of hosting a wide array of events, from international conferences and corporate events to small-scale business meetings and wedding ceremonies.



WHERE INSPIRATION SETS YOU FREE



INSPIRE ENTERTAINMENT RESORT

Welcome to **INSPIRE Entertainment Resort**, where **Inspiration Sets You free**

At INSPIRE, we believe that inspiration is the heartbeat of innovation, a catalyst for seeing, hearing, and feeling the world in a fresh and exhilarating way. Here, inspiration radiates from every nook and cranny. We invite you to a space where the thrill of the unfamiliar, the joy of discovery, and the rush of unexpected emotions converge into a symphony of experiences.

150 m **Aurora** | Immersive LED digital entertainment street

365 Days at **Splash Bay** | An indoor water park, capturing summer year-long under a glass dome.

1,275 **Rooms** | 5-star Hotel comprised of 3 unique Hotel Towers

3,000 Guest **Event Facility** | Cutting-edge banquet and meeting facilities, including Korea's largest hotel ballroom

15,000 Seat **Arena** | Premier multi-purpose performance venue with a world-class stage

30,000 Guest **Discovery Park** | Outdoor entertainment park with immersive experiences.



LOCATION

Located just a 15-minute drive from Terminal 2, Incheon International Airport, INSPIRE Entertainment Resort is highly accessible from major cities in the Northeast Asian region and is about an hour away from the center of Seoul.

SHUTTLE BUS

We offer a free shuttle service to and from Incheon International Airport.

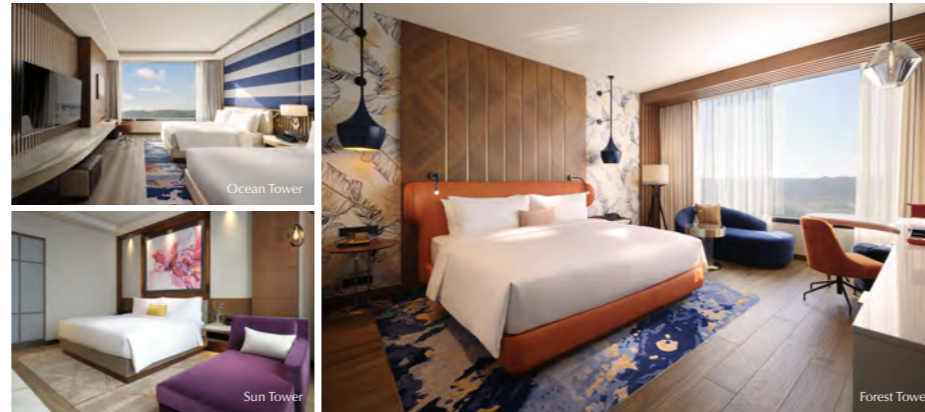
- Incheon International Airport T1 Arrival: 2C, 14C
- Incheon International Airport T2 Arrival: 6A



Scan for Shuttle Bus Timetable

HOTEL

Our three 5-star Hotel Towers, comprised of 1,275 rooms, were designed to reflect the outstanding natural landscape of Yeongjong Island. Each with its own unique concepts and motifs, the Forest, Ocean, and Sun Towers offer Deluxe Rooms, Suites, and Villas in a variety of sizes and styles.



SPLASH BAY / WELLNESS CLUB / V SPA

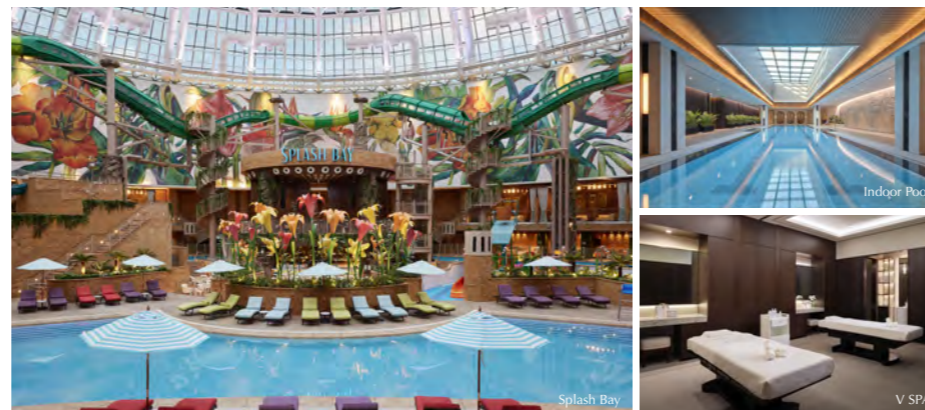
Experience an eternal summer at Splash Bay. Sheltered under a crystalline dome, Splash Bay offers a wide variety of water attractions and tropical excitement. Spend sun-soaked days in the refreshing waters and experience night-time excitement under a star-studded sky.

INDOOR POOL, SAUNA, FITNESS CENTER

Wide range of equipment from the premium fitness brand 'Matrix'
Guests-only indoor pool equipped with a sauna

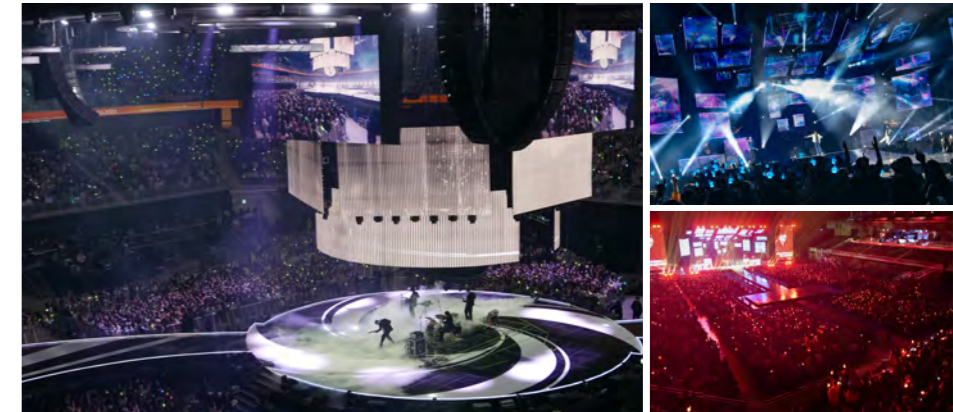
V SPA

Immerse yourself in spa and massage treatments at V SPA, featuring 'Valmont,' a premium Swiss anti-aging brand, and 'Thalgo,' France's leading marine cosmetic brand.



ARENA

Resounding with emotion and charged energy, INSPIRE Arena stands as Korea's first multi-purpose performance venue, boasting a capacity of 15,000 seats. It features a world-class sound system, primed to stage performances of global pop artists and K-Pop sensations as well as awards ceremonies, sports events, e-sports tournaments, and more.



CASINO

INSPIRE's foreigner-only casino boasts a cutting-edge gaming space offering a vast array of games. With a magnificent space capable of accommodating players of all levels, from novice to VIP, every player will be able to experience the thrill of the game.

FEATURES

- 150 Table Games
- 374 Slot Machines & 176 Electronic Table Games
- Private Casino Level for VIPs Only
- Entertainment Bars & Lounge
- Private Spa for VIPs
- Private Entrance & Lobby

